

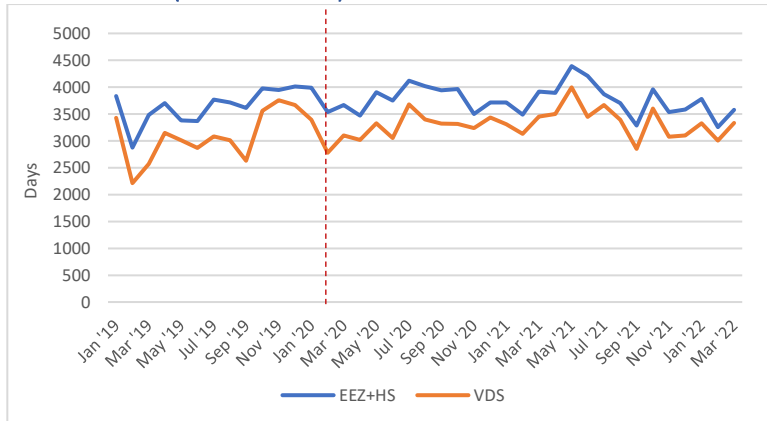


### Key trends:

- Preliminary figures indicate that both overall purse seine fishing days and VDS day usage rose slightly in March, although fishing intensity (fishing days/calendar day) remained steady. Note that March figures may be adjusted as NFDs are processed.
- Total purse seine catch (EEZs+HS) rose in March, up by around 14% on the February total. Higher catch was largely driven by increases in SKJ volume, with YFT catches remaining relatively stable. Catch and effort remained broadly concentrated in the west, with catches highest in PNG and SB.
- Based on preliminary figures, overall catch rates rose slightly in March. SKJ catch rates rose slightly, while catch rates of large YFT continued to fall.
- Transshipment volumes rose, up by around 30% on February volumes. Transshipments were highest in PNG, accounting for around 46% of total volume.
- Bangkok SKJ prices averaged \$1900 in March, up from \$1650 in February, according to Thai Union figures. Singapore MGO price continued its sharp rise in March, averaging \$1,080/mt.
- Amongst key SE Asian processing countries, new case numbers in Vietnam have fallen sharply from over 250,000 new cases per/day in mid March to around 50,000/day in mid-April. Thailand's new daily case numbers have levelled out at around 24,000/day, while cases in Philippines, Indonesia and Ecuador have fallen to low levels. Amongst PNA Parties, case numbers remain high in the Solomons, but have fallen in Kiribati. Nauru recorded its first 3 confirmed COVID cases in early April.

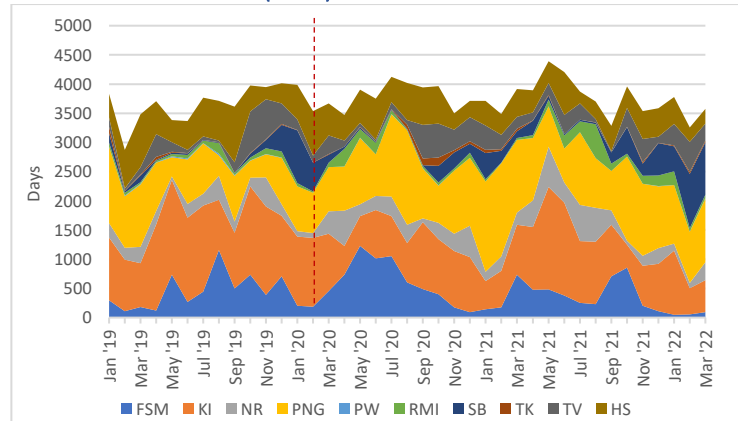
### Fishing effort

Overall effort (PNA EEZs+HS)



- Both overall fishing effort (EEZ+HS) and VDS days usage rose in Mar, although fishing intensity (fishing days/calendar day) remained steady. VDS usage in Mar was marginally above average for the 2019-2022 period.

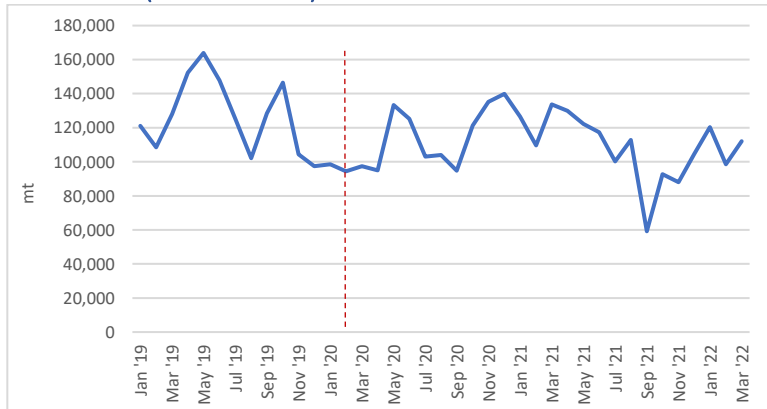
Distribution of effort (EEZs)



- Effort was highest in the west, with PNG and SB collectively accounting for 56% of total effort. Effort rose in NR and fell in TV. Preliminary figures indicate effort remains concentrated in the west in Apr, with high levels of effort in PNG.

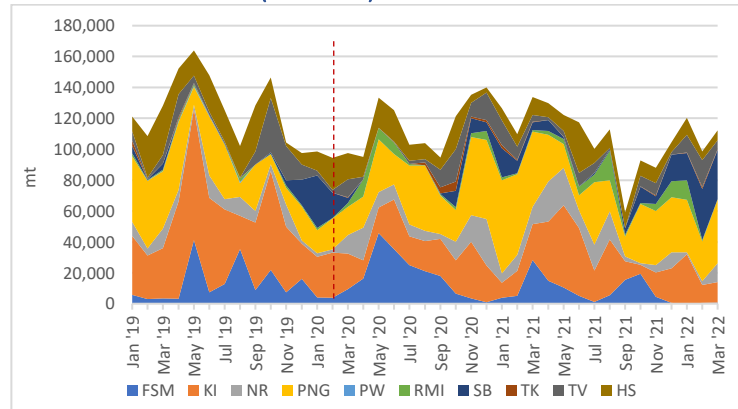
### Catch

Total catch (PNA EEZs+HS)



- Total catch (EEZ+HS) rose in Mar, up around 14% on the Feb total (112,126t vs 98,585t). The increase was largely driven by increased SKJ catch, with YFT remaining stable.

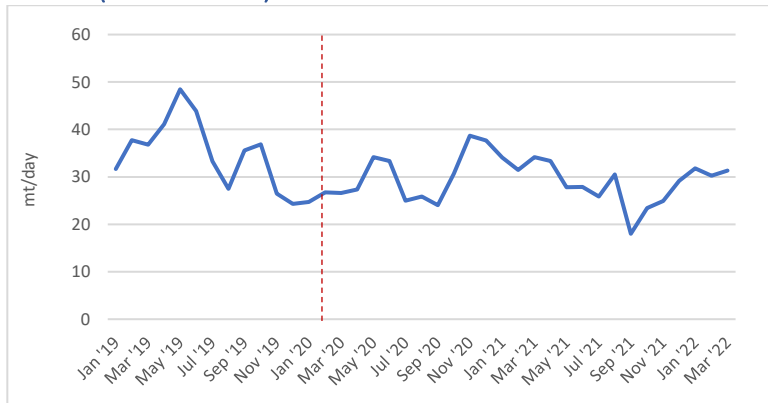
Distribution of catch (EEZs+HS)



- Catches broadly reflected effort, with catches highest in PNG and SB, collectively accounting for 65% of total EEZ+HS catch. Consistent with effort, catches rose in NR but fell in TV.

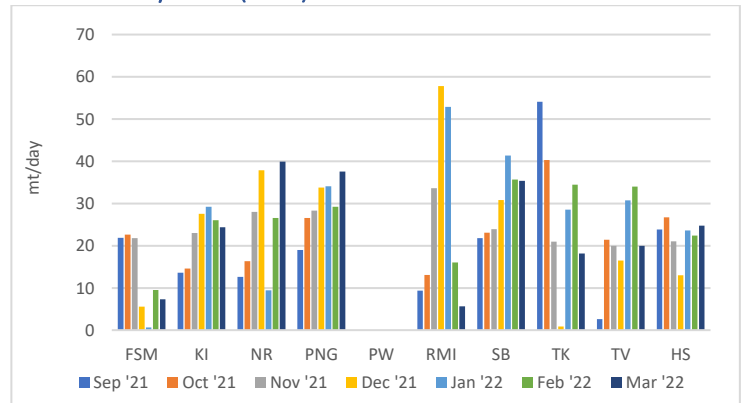
## Catch rates

### Overall (PNA EEZs+HS)



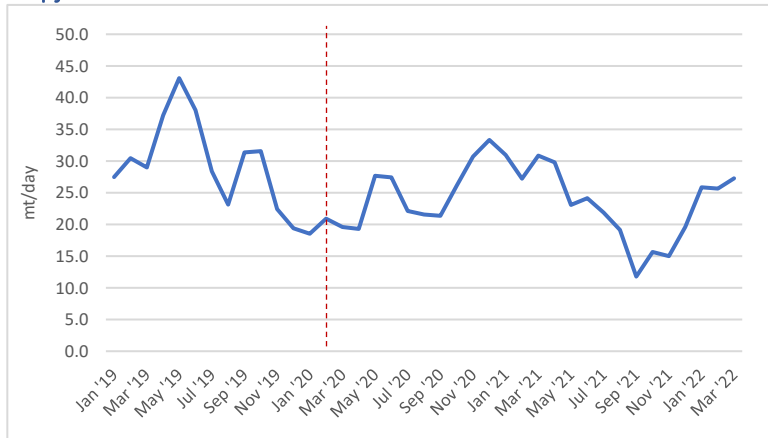
- Overall catch rates rose slightly in Mar, sitting around average for the 2019-2022 period. These figures are preliminary and may be adjusted slightly as NFDs are processed and additional e-reporting is received.

### Catch rate by zone (EEZs)



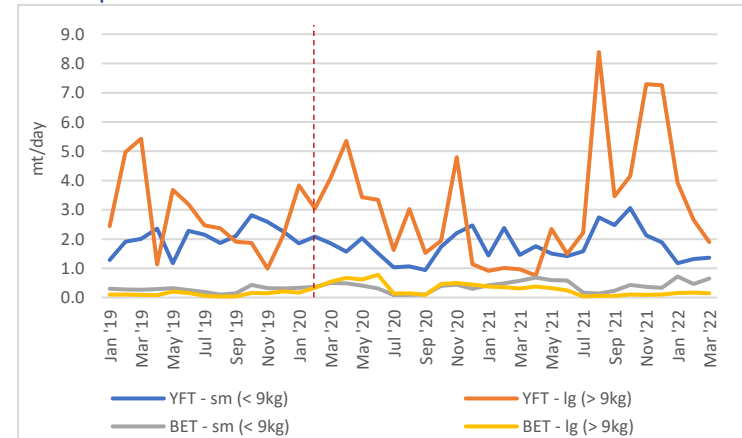
- Preliminary figures indicate that catch rates varied across the region, with rates highest in NR, PNG and SB. NR's catch rate rose sharply, while catch rates fell in TV and remained low in FSM and RMI.

### Skipjack



- SKJ catch rate rose slightly in Mar, sitting slightly above average levels for the '19-'22 period.

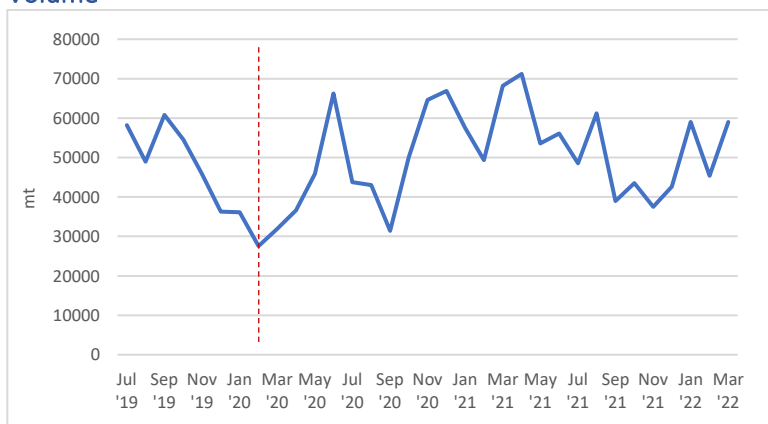
### Other species



- Amongst the other purse seine species/size categories, catch rates of large YFT continued to fall. Catch rates of small YFT and BET rose slightly, while large BET remained stable.

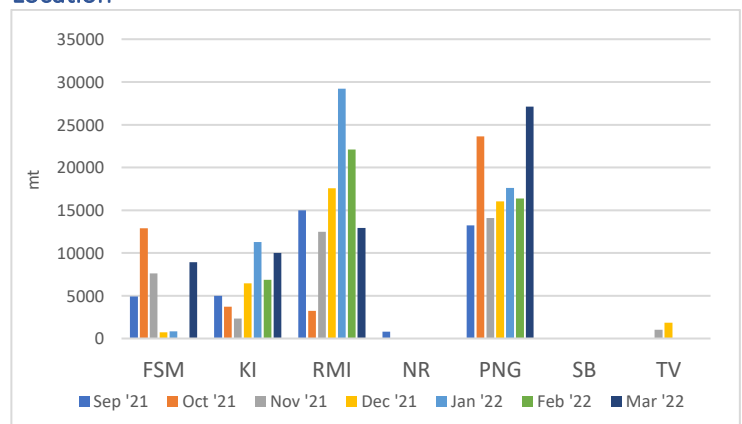
## Transshipment

### Volume



- Transshipment volumes in PNA ports rose in Mar, up by around 30% on Feb volumes (from 45,337t to 58,985t).

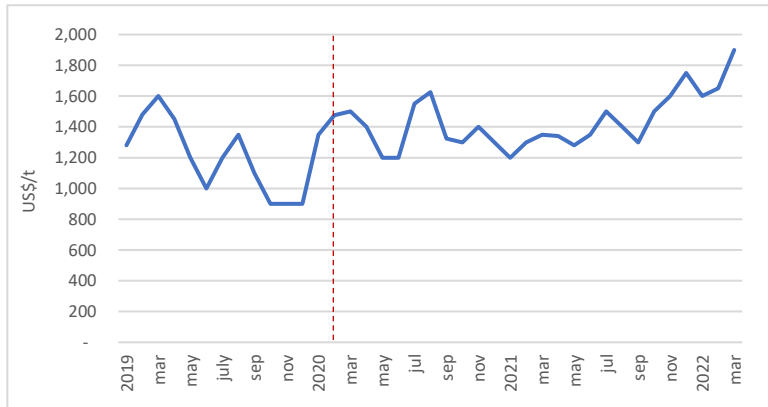
### Location



- Transshipment volumes were highest in PNG ports, accounting for around 46% of overall volume. Transshipments in Majuro declined, while FSM rose. No transshipments were reported in SB despite high levels of catch and effort.

## Prices

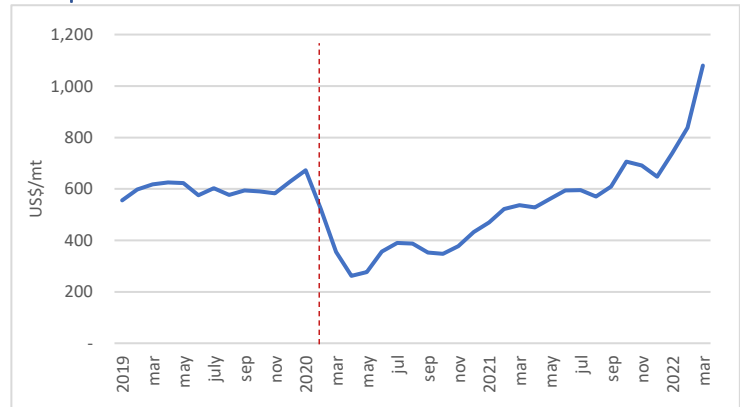
### SKJ Price



[https://investor.thaiunion.com/raw\\_material.html](https://investor.thaiunion.com/raw_material.html)

- Thai Union report that Bangkok SKJ prices averaged around \$1900 in Mar, up from \$1650 in Feb. The Mar '22 price is the highest monthly price since Nov 2017.

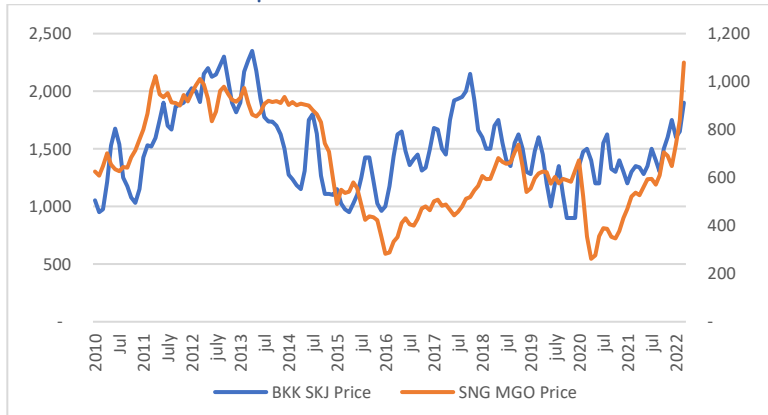
### Fuel price



<https://shipandbunker.com/prices/apac/sea/sg-sin-singapore#MGO>

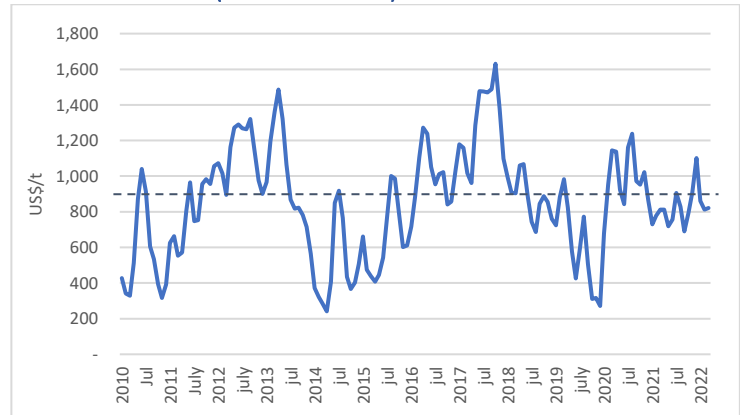
- Singapore MGO price continued to rise Mar, averaging US\$1,080/mt, up from US\$839/mt in Feb. Price in April has remained stable, sitting at US\$1,073/mt as at April 13<sup>th</sup>.

### BKK SKJ Price vs Fuel price



- The BKK SKJ price and Singapore MGO price index lines 'crossed' substantially for the first time since the start of the pandemic in Feb/Mar, driven by sharply rising fuel price.

### Price differential (BKK SKJ – Fuel)



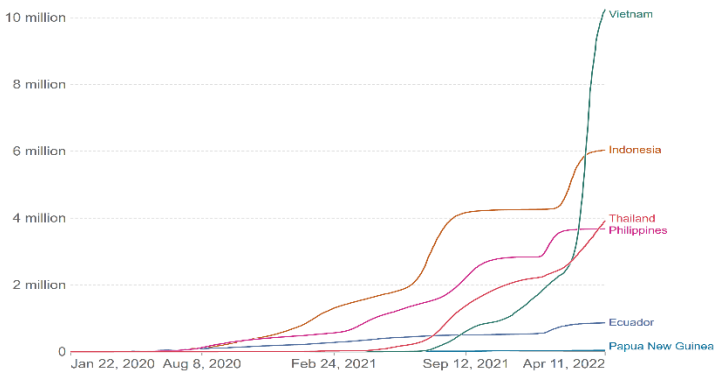
- The price differential between BKK SKJ price and Singapore MGO rose slightly to US\$821 in Mar, up from US\$812 in Feb. The differential is below the 10yr average of around US\$881.

## COVID-19 in processing countries

### Total cases

#### Cumulative confirmed COVID-19 cases

Due to limited testing, the number of confirmed cases is lower than the true number of infections.



Source: Johns Hopkins University CSSE COVID-19 Data

CC BY

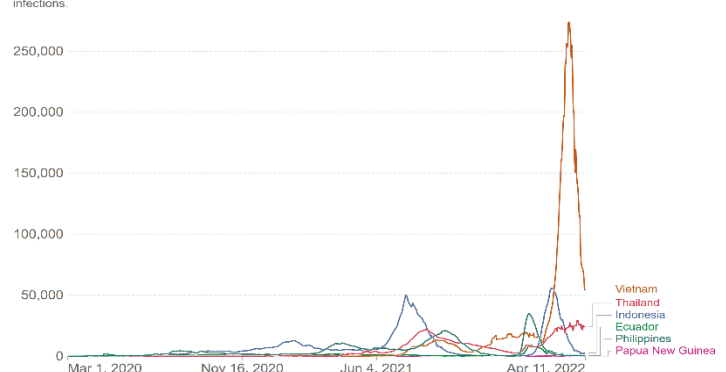
<https://ourworldindata.org/covid-cases>

- The recent spike in cases in Vietnam has seen it surpass Indonesia as having highest cumulative case numbers amongst SE Asian processing countries. Total case numbers have plateaued in the Philippines and Ecuador, but continue to rise in Thailand.

### Daily confirmed cases

#### Daily new confirmed COVID-19 cases

7-day rolling average. Due to limited testing, the number of confirmed cases is lower than the true number of infections.



Source: Johns Hopkins University CSSE COVID-19 Data

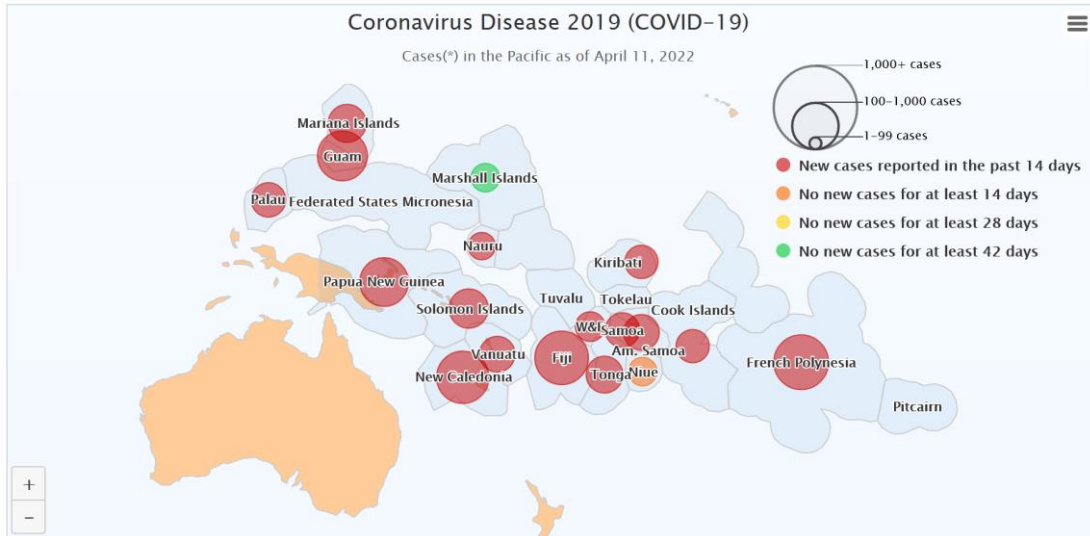
CC BY

<https://ourworldindata.org/covid-cases>

- The severe spike in cases in Vietnam in Mar has declined just as quickly, with new case numbers falling from over 250,000/day in mid-March to around 50,000/day in mid-April. Thailand's case numbers have remained stable at around 24,000/day in mid April. Cases in Philippines, Indonesia and Ecuador have fallen substantially.

Other issues:

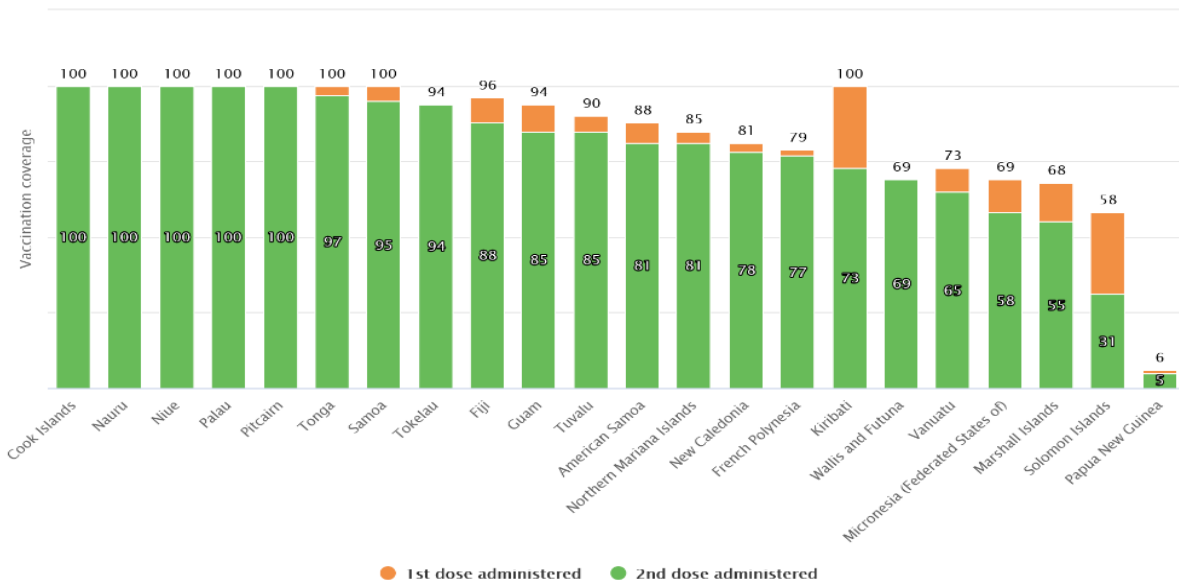
- COVID case numbers in SB remain relatively high with 1,227 new cases reported in the 14 days to 11<sup>th</sup> April<sup>1</sup>. Cases numbers in KI have fallen with only 4 new cases reported in the 14 days to 11<sup>th</sup> April, down from 32 in the previous 2 weeks. Nauru has reported its first 3 confirmed COVID cases of the pandemic, with passengers on a flight from Brisbane in early April testing positive<sup>2</sup>. Trends in COVID-19 case numbers in the Pacific as of 11<sup>th</sup> Apr (as reported through the SPC ‘COVID-19: Pacific Community Updates’ website<sup>3</sup>) are set out below:



- SPC report that rates of vaccination in the Pacific are generally very high, with each of NR, PW, TK, TV and KI achieving >90% first dose vaccination rates amongst PNA Parties. Vaccination rates in SB are climbing, while PNG remains at low levels.

COVID-19 vaccination coverage in Pacific Island Countries and Territories

Updated on April 11, 2022 from PDH.stat



- Atuna reports that rising fuel costs associated with the Ukraine-Russian war are placing upward pressure on Bangkok SKJ price, with prices nearing US\$2,000/t<sup>4</sup>. Atuna also reports that shortages of sunflower oil and ongoing high freight costs are resulting in high production costs for canners<sup>5</sup>.

Notes:

- Data on catch, effort, catch rates and transshipment is based on electronic reporting through iFIMS as at 13<sup>th</sup> April, 2022. Some data may change as more information is added over time. Figures for March 2022 should be considered preliminary.
- The EEZs+HS effort figures in the fishing effort graph do not include a VDS vessel size adjustment factor. The actual VDS usage figures are adjusted for vessel size. HS days may include some non-fishing time. HS effort figures are those for the eastern high seas and HSPs 4 and 5.
- A dashed-red line has been on many graphs at February 2020 to provide an indication of the time in which COVID-related restrictions were becoming more common globally and regionally.

<sup>1</sup> <https://www.spc.int/updates/blog/2022/04/covid-19-pacific-community-updates#CurrentStatus>

<sup>2</sup> <https://www.sbs.com.au/news/article/nauru-announces-first-covid-19-cases-in-passengers-who-arrived-on-flight-from-brisbane/v2vntvc>

<sup>3</sup> <https://www.spc.int/updates/blog/2021/12/covid-19-pacific-community-updates#CurrentStatus>

<sup>4</sup> <https://atuna.com/news/high-fuel-costs-forcing-skj1-8-bkk-towards-usd2-000-barrier>

<sup>5</sup> <https://atuna.com/news/boat-owners-give-skj1-8-bkk-a-big-push-upwards-no-relief-in-sight>